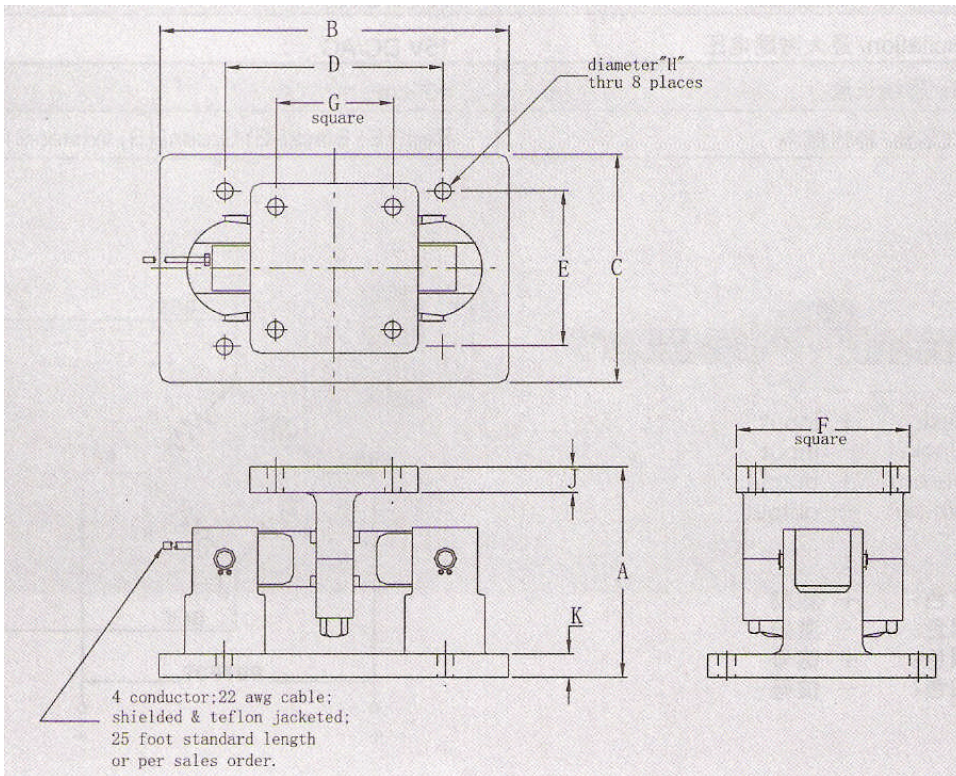
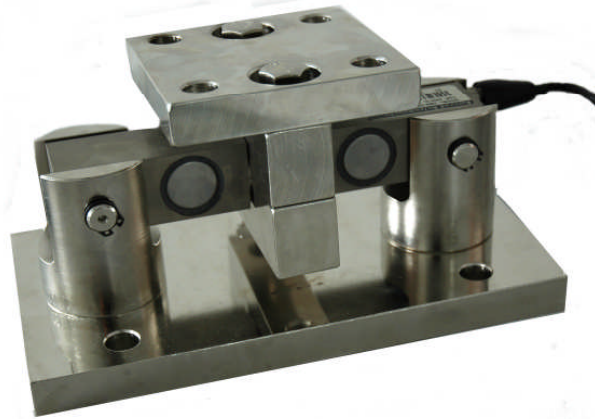




TRANSCELL TECHNOLOGY, INC.

DBS LOAD CELL MOUNT



	DIMENSIONS - INCHES	
	CAPACITY	
	1 - 5K	10K - 30K
A	4.65	6.73
B	9.37	11.02
C	5.00	7.87
D	6.26	7.52
E	3.62	5.51
F	4.02	7.87
G	2.76	5.51
H	0.55	0.79
J	0.59	0.94
K	0.59	0.71

CAPACITY	1k	1.5k	2k	3k	5k	10k	15k	20k	25k	30k
LIST PRICE	\$2423	\$2423	\$2423	\$2423	\$2423	\$3183	\$3183	\$3183	\$3183	\$4183

Prices are for set of four, alloy steel mounts with NEMA 4 ABS Junction Box, 25 feet of load cell from each cell, and 50 feet of load cell cable to indicator.